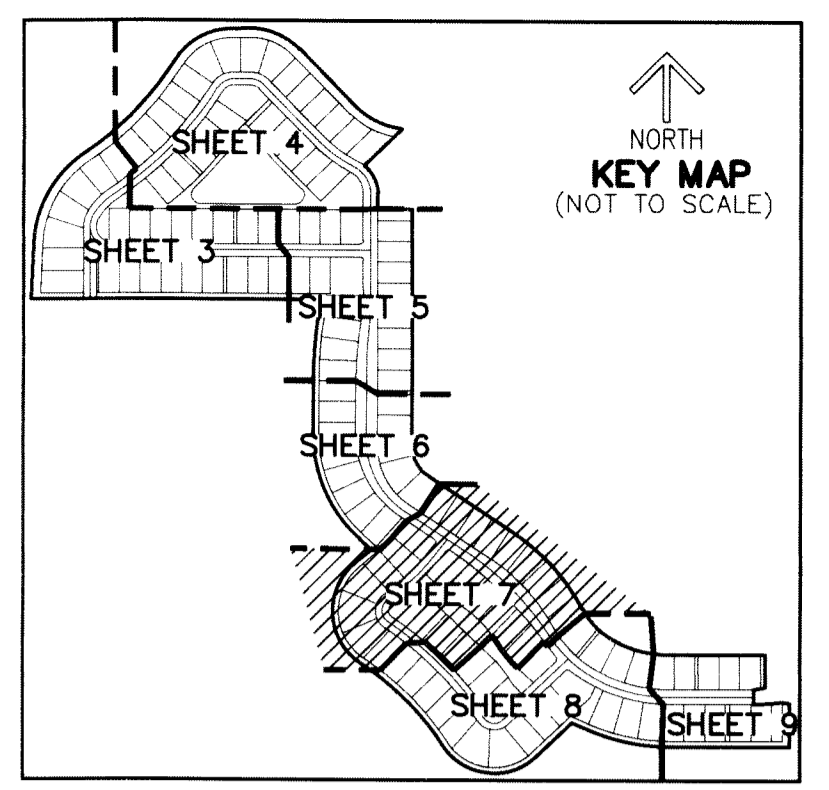
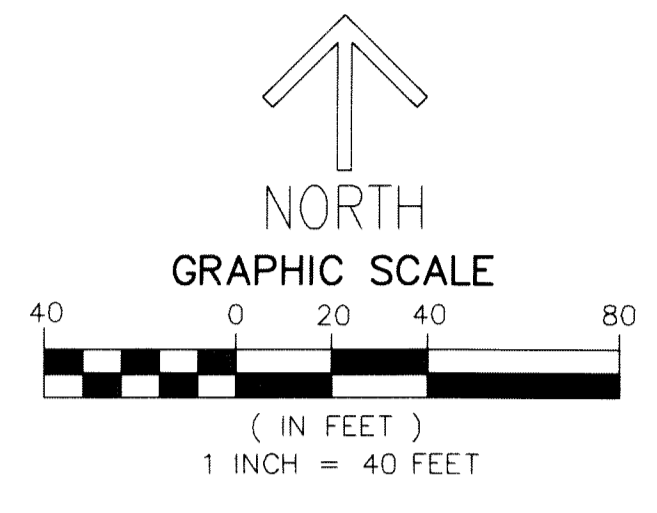


THIS INSTRUMENT PREPARED BY
 RONNIE L. FURNISS
 OF
CAULFIELD and WHEELER, INC.
 SURVEYORS - ENGINEERS - PLANNERS
 7900 GLADES ROAD, SUITE 100
 BOCA RATON, FLORIDA 33434 - (561)392-1991
 CERTIFICATE OF AUTHORIZATION NO. LB3591
 SEPTEMBER 2022

PANTHER NATIONAL AT AVENIR POD 12

A REPLAT OF A PORTION OF TRACT 1, PANTHER NATIONAL AT AVENIR, AS RECORDED IN
 PLAT BOOK 134, PAGE 18 OF THE PUBLIC RECORDS OF PALM BEACH COUNTY, FLORIDA,
 LYING IN SECTIONS 8 AND 9, TOWNSHIP 42 SOUTH, RANGE 41 EAST,
 CITY OF PALM BEACH GARDENS, PALM BEACH COUNTY, FLORIDA.

MATCH LINE SHEET 6



126

SHEET 7 OF 9



- LEGEND / ABBREVIATIONS**
- E - CENTERLINE
 - Δ - DELTA (CENTRAL ANGLE)
 - AC - ACRES
 - CB - CHORD BEARING
 - CD - CHORD DISTANCE
 - DE - DRAINAGE EASEMENT
 - FSE - FIRE SAFETY ACCESS EASEMENT
 - L - ARC LENGTH
 - LM - LAKE MAINTENANCE ACCESS EASEMENT
 - LAE - LIMITED ACCESS EASEMENT
 - LB - LICENSED BUSINESS
 - LBE - LANDSCAPE BUFFER EASEMENT
 - LSE - LIFT STATION EASEMENT
 - O.R.B. - OFFICIAL RECORD BOOK
 - P.B. - PLAT BOOK
 - R - RADIUS
 - PG./PGS. - PAGE/PAGES
 - O-1 - OPEN SPACE TRACT 1
 - (NR) - INDICATES NON RADIAL LINE
 - RBE - ROADWAY BUFFER EASEMENT
 - SF - SQUARE FEET
 - UE - UTILITY EASEMENT
 - SUAE - SEACOAST UTILITY AUTHORITY EASEMENT
 - 8-42-41 - SECTION 8, TOWNSHIP 42 SOUTH, RANGE 41 EAST
 - P.P.A.E. - PERPETUAL PUBLIC ACCESS EASEMENT
 - PC - POINT OF CURVATURE
 - PT - POINT OF TANGENCY
 - PNT - POINT OF NON-TANGENCY
 - PRC - POINT OF REVERSE CURVATURE
 - PCP - SET PERMANENT CONTROL POINT NAIL AND DISK STAMPED "C&W LB 3591"
 - PRM - SET PERMANENT REFERENCE MONUMENT SET 5/8" IRON ROD WITH CAP STAMPED "C&W LB 3591"
 - PRM - FOUND PERMANENT REFERENCE MONUMENT 4" x 4" x 24" CONCRETE MONUMENT WITH DISK STAMPED "PRM LB 3591"
 - ◄ - 1/4 SECTION CORNER

R=342.00'
 Δ=36°50'22"
 L=219.90'
 CD=216.13'
 CB=S47°09'30"E

R=1259.00'
 Δ=20°16'05"
 L=445.37'
 CD=443.05'
 CB=N46°35'41"W